

PROVIDERS¹

Total Number of Grantees/Delegates: 67

Early Head Start: **20**

Head Start: **47**

American Indian/Alaska Native Head Start: **0**

American Indian/Alaska Native Early Head Start: **0**

Migrant/Seasonal Head Start: **0**

ACCESS

Number of Children in Poverty Ages 0-5²: 112,000

Total Funded Enrollment¹: 20,735

Early Head Start: **1,790**

Head Start: **18,945**

American Indian/Alaska Native Head Start: **0**

American Indian/Alaska Native Early Head Start: **0**

Migrant/Seasonal Head Start: **0**

Homeless Children Served³: 480

Children with Disabilities Served³: 2,232

Pregnant Women Served³: 146

Families Receiving Family Services^{3*}: 2,470

*Family services include mental health care, dental health care, housing assistance, parenting education, smoking cessation, job education and more.

Research on Head Start has shown that participating families are more likely to invest time in literacy activities with their children, both while enrolled and years after their children graduate from the program.⁵

QUALITY

Head Start and Early Head Start programs engage in continuous quality improvement efforts. Among other notable accomplishments, the national percentage of Head Start teachers with Bachelors degrees has increased from 38% to 66% since 2007.

Percent of Head Start Teachers with BA or Advanced Degrees³: 61%

Over Head Start children's lives they are less likely to need special education services⁶ or engage in unhealthy behaviors⁷ and are more likely to achieve success in school and in life.

ECONOMIC IMPACT

Fiscal Year 2014 Enacted Funding¹²: 170,152,378

Fiscal Year 2015 Estimated Funding^{*12}: \$172,704,664

**Enrollment information for the 2014-2015 school year will be collected and available by Fall 2015*

Total Jobs³: 4,660

State Average Salary for Head Start Teachers with a BA¹: \$27,252

State Average Salary for Early Head Start Teachers with a Child Development Associate Credential¹: \$21,869

The Head Start investment pays off: for each \$1 invested, Head Start yields an annual ROI ranging from 7-9%.⁸

SEQUESTRATION

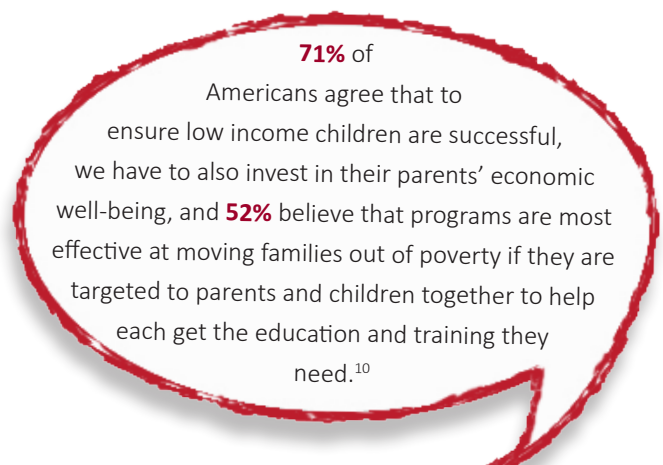
Funding Cut Due to

Sequestration⁴: \$8,852,590



Children Unserved Due to Sequestration¹: 1,018

Jobs Lost Due to Sequestration¹¹: 491



Head Start is the original two-generation model, and over the past fifty years comprehensive health, education, and self-sufficiency supports for children and their parents have helped thirty-two million families achieve success in school and in life.

STATE CONTEXT

EARLY HEAD START-CHILD CARE PARTNERSHIPS

Estimated new funding for EHS Expansion and EHS-CC Partnerships¹³: \$8,200,000
Projected children served¹⁴: 656

INFANT AND TODDLER CARE

Children birth to 3 in Poverty¹³: 57,071
Federally-Funded Early Head Start Slots¹⁴: 1790
State-Funded Early Head Start Slots¹⁴: 0
State Average Annual Cost of Center-Based Infant Care¹⁵: \$5,655
Children birth to 3 Receiving Child Care Subsidies¹⁷: 9,600
National Average Annual Subsidy for Children birth to 3¹⁷: \$5,568

EARLY HEAD START HOME VISITING

Office of Head Start-Funded Slots¹³: 109
Maternal, Infant, and Early Childhood Home Visiting (MIECHV) Funded Slots¹⁴: 0

PRESCHOOL AND PRE-K

Children 3 and 4 in Poverty¹³: 38,475
Federally-Funded Head Start Slots¹⁴: 18,941
State-Funded Head Start Slots¹⁴: 4
State-Funded Pre-K Slots¹⁶: 19,871

Endnotes

1. U.S. Department of Health and Human Services. (2014, November 1). 2013-2014 Head Start Program Information Report.
2. Kids Count Data Book. (2014). Children in poverty by age group. The Annie E. Casey Foundation. from <http://datacenter.kidscount.org/data>
3. U.S. Department of Health and Human Services. (2014, November 1). 2013-2014 Head Start Program Information Report. The number of children and families served in a year may exceed the total funded slots where transient populations led to turnover in enrollment during the program year.
4. Sequestration data obtained from "Under Threat: Sequestration's Impact on Nondefense Jobs and Services," a report by Senator Tom Harkin, Chairman, Senate Appropriations Subcommittee on Labor, Health and Human Services, and Education, and Related Agencies Harkin, T. (2012, July).
5. National Bureau of Economic Research. (2011, December). "Children's Schooling and Parents' Investment in Children: Evidence from the Head Start Impact Study (Working Paper No. 17704)". Cambridge, MA: A. Gelber & A. Isen.
6. Zhao, H. & Modarresi, S. (2010, April). "Evaluating Lasting Effects of Full-day Prekindergarten Program on School Readiness, Academic Performance and Special Education Services". Office of Shared Accountability of Montgomery County Public Schools.
7. Anderson, K.H., Foster, J.E., & Frisvold, D.E. (2010). Investing in Health: the Long-term Impact of Head Start on Smoking. *Economic Inquiry*, 48(3), 587-602.
8. Ludwig, J. and Phillips, D. (2007). The Benefits and Costs of Head Start. *Social Policy Report*. 21 (3: 4).
9. Shonkoff, J. P., & Phillips, D. (2000). *From Neurons to Neighborhoods: The Science of Early Childhood Development*. Washington, D. C.: National Academy Press.
10. Risley, T. R & Hart, B. (2006). Promoting early language development. In N. F. Watt, C. Ayoub, R. H. Bradley, J. E. Puma & W. A. LeBoeuf (Eds.), *The crisis in youth mental health: Critical issues and effective programs, Volume 4, Early intervention Programs and Policies* (pp. 83-88). Westport, CT: Praeger.
11. Data provided by the Administration for Children and Families and the U.S. Department of Health and Human Services.
12. Justification of Estimates for Appropriations Committees, Fiscal Year 2015. March 2014. Administration for Children and Families, Department of Health and Human Services. https://www.acf.hhs.gov/sites/default/files/olab/2015_acf_cj_posted_on_3_7_14.pdf
13. Kids Count Data Book. (2014). Children in poverty by age group. The Annie E. Casey Foundation. from <http://datacenter.kidscount.org/data>
14. Administration of Children and Families. (2014). Program Information Report (PIR) 2013-2014: Federally-funded early head start slots. Washington, DC: U.S. Department of Health and Human Services
15. Child Care Aware of America. (2014). Parents and the high cost of child care 2014 report from <http://usa.childcareaware.org/costofcare>
16. Barnett, W.S., Carolan, M.E., Squires, J.H., Clarke Brown, K. (2013). *The state of preschool 2013: State preschool yearbook*. New Brunswick, NJ: National Institute for Early Education Research.
17. Office of Child Care. Administration of Children and Families. (2014). FY 2013 CCDF Data Tables (Preliminary). Washington, DC: U.S. Department of Health and Human Services from <http://www.acf.hhs.gov/programs/occ/resource/fy-2013-ccdf-data-tables-preliminary>